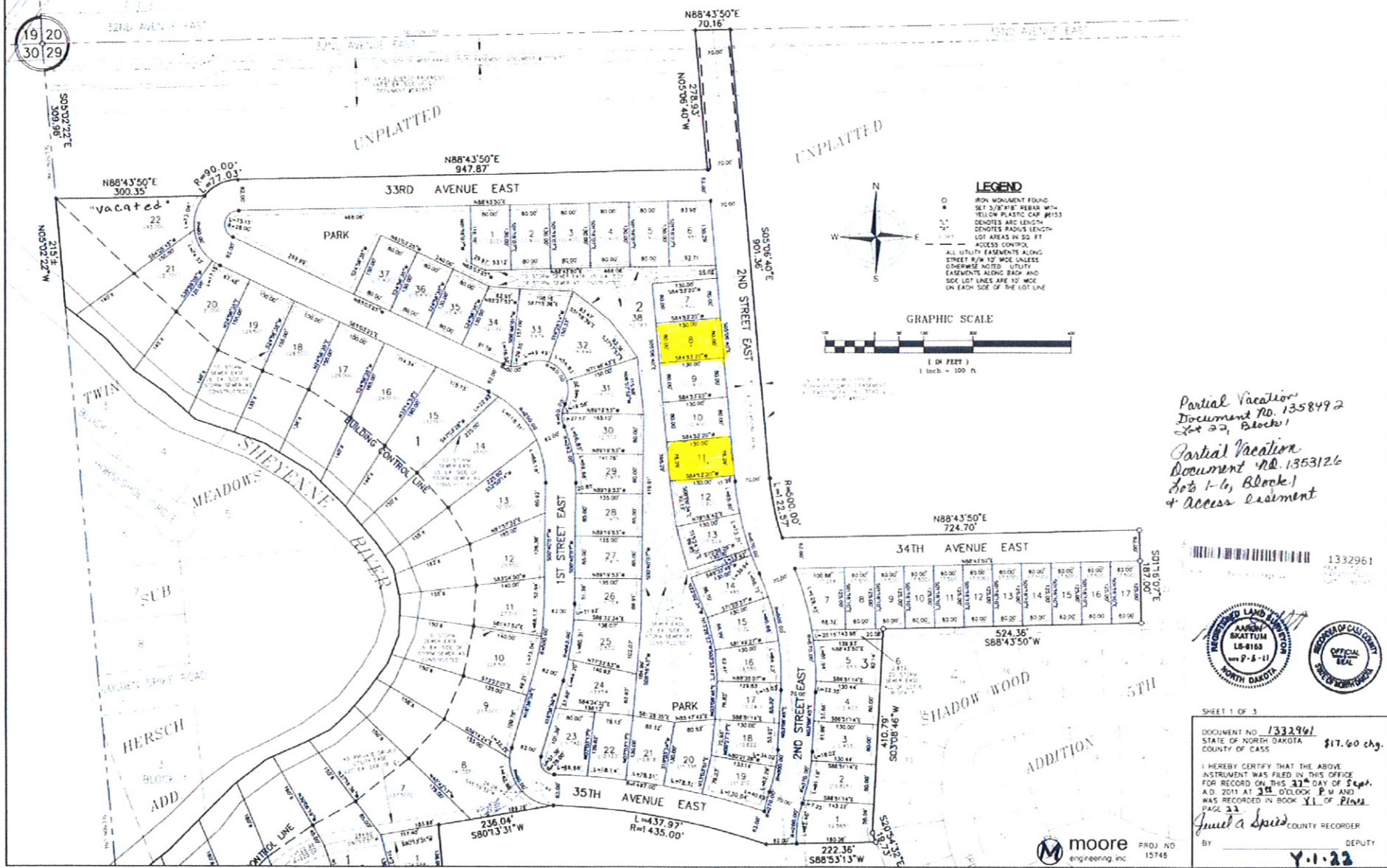


PLAT OF SHADOW CREEK FIRST ADDITION TO THE CITY OF WEST FARGO, A  
 PLAT OF PART OF THE NORTHWEST 1/4 OF SECTION 29, TOWNSHIP 139 NORTH, RANGE 49 WEST,  
 CASS COUNTY, NORTH DAKOTA.



*Partial Vacation  
 Document No. 1358492  
 Lots 22, Block 1*

*Partial Vacation  
 Document No. 1353126  
 Lots 1-6, Block 1  
 + Access Easement*

1332961



SHEET 1 OF 3

DOCUMENT NO. **1332961**  
 STATE OF NORTH DAKOTA  
 COUNTY OF CASS **\$17.60 chg.**

I HEREBY CERTIFY THAT THE ABOVE INSTRUMENT WAS FILED IN THIS OFFICE FOR RECORD ON THIS **21<sup>ST</sup>** DAY OF **SEP.** A.D. 2011 AT **2:11** O'CLOCK P.M. AND WAS RECORDED IN BOOK **XL** OF **PLATS** PAGE **23**

*Janet A. Spies* COUNTY RECORDER  
 BY \_\_\_\_\_ DEPUTY

**Y-1-23**

**moore** PROJ. NO. 15745  
 engineering, inc.

**Shadow Creek 1<sup>st</sup> Addition – West Fargo, ND**

- 3322 2<sup>nd</sup> St E, West Fargo, ND - Lot 8, Block 2, Shadow Creek 1<sup>st</sup> Addition
- 3340 2<sup>nd</sup> St E, West Fargo, ND - Lot 11, Block 2, Shadow Creek 1<sup>st</sup> Addition